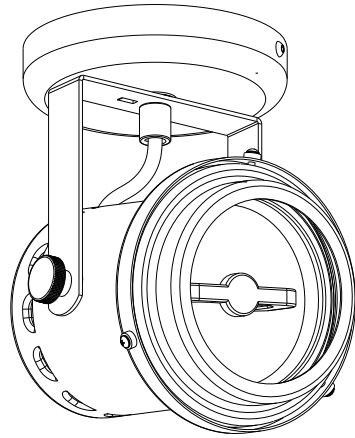


CS-00010

enigmalinghting

t.01420 473 889
e.sales@enigmalighting.com
www.enigmalighting.com



enigmalighting

Product: Surface Pin-Spot LED
Light Source: AR111



WARNING [1] The safety of this fixture is guaranteed only if you comply with these instructions; remember to conserve in a safe place.

[2] When the lamp reaches its end of life contact the manufacturers to obtain correct replacement; follow relamp instruction upon installation of the new lamp.

[3] Installation should be carried out by a qualified electrician.

[4] This luminaire is for indoor use only.

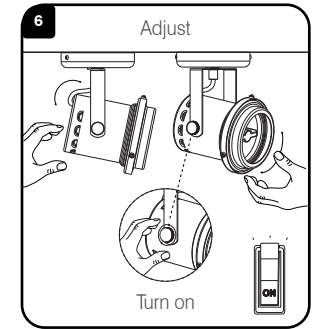
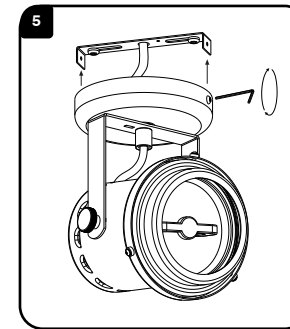
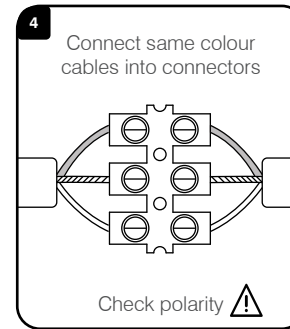
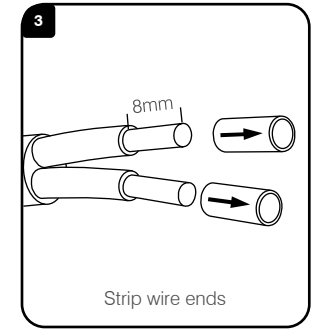
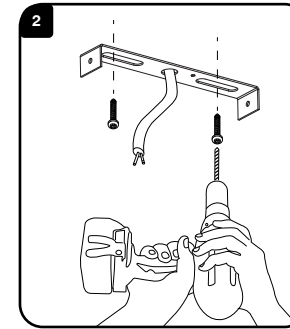
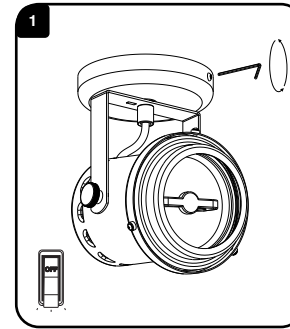
[5] When installing the system, strictly comply with all regulations on installation in force.

[6] Do not use excessive force when adjusting.

[7] Observe lamp polarity.

[8] Clean with dry cloth only.

Installation



Relamp Instructions

