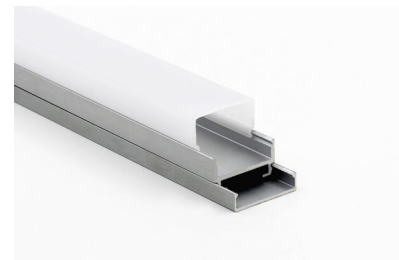


FLEXILED PLUS

This dimmable IP65 flexible LED tape provides a robust and durable solution for both professional and domestic applications. Available in a variety of CCT and CRI outputs, on 5 meter reels and with an additional mounting profile and diffuser kit. This versatile product provides uniform and colour consistent light for both direct and indirect environments.



Specification

Code	LI
Family	00001
Range	Enigma
Mounting Type	LED Tape
Input	24V
Light Source	LED
Watt Per Meter	14
Lumens Per Meter	900
Chip Specification	CRI : 90, Kelvin 2200, CRI : 90, Kelvin 2700, CRI : 90, Kelvin 3000
Dimming	Mains Dimmable
Colour	White
Height	4mm
Width	12.5mm
Length	5000mm
IP Rating	IP65
Accessories	Deep diffuser profile kit, Shallow Diffuser Profile Kit

